

## inside

- 1 Message from the General Manager
- 2 Extreme-Track Makeover  
More Room for Nutmeg on the HARC Soccer Fields
- 3 The Samaritan Centre: A Good Neighbour  
Minnow Lake Sk8 Park: A Total 360
- 4 Investing in History  
Barrier-Free Fun
- 5 Home is where the Heart is
- 6 What is the "North East Centre of Excellence for Seniors' Health"?
- 7 Toddling to School  
Adanac Ski Hill: A Community Success Story
- 8 A Match Made in Azilda  
Expanding Civic Memorial Cemetery
- 9 The Northern Aquatic Centre
- 10 Creating a Community Archive  
Sweet Boxes at the Sudbury Arena
- 11 Timeline of Community Development Infrastructure Projects
- 13 Mayor and Council
- 14 Healthy Community Charter

**Writer:**  
Bernadette Walicki

**Design:**  
Corporate Communications  
and French Language Services

# Infrastructure:



## *Creating Community Together*

### Message from the General Manager

The Community Development Department continues to pursue its passion of "creating community together". This newsletter has been dedicated to the acknowledgement of the significant milestones of infrastructure development in the past 5 years. We have brought forward a selection of projects for your interest. Each and every project identified in this edition was undertaken at the specific direction of City Council. All projects began with community will, which led to council support and the commitment of government and/or non government partnerships. Each and every project engaged staff which through commitment resulted in projects delivered on time and on budget. As well, each and every initiative emulates the foundations of the City's Healthy Community Strategy by seeking to improve both human health and community sustainability.

It becomes clear from reading this communiqué that it takes many types of partnerships to create a healthy community. Every infrastructure project built has relied upon the advice, assistance and insight of community members. From the beginning of an initiative, through to the planning stage, a critical success factor becomes the engagement of stakeholders and users of facilities/services. The City of Greater Sudbury is fortunate to have the expertise and willingness of many community partners who invest time and energy toward infrastructure initiatives which enhance quality of life.

Capital investments can be relatively small or incredibly large. All projects have involved investors, such as community partners, City Council, and often Provincial and Federal governments. With the recent \$4 billion Infrastructure Stimulus fund announced by the Federal Government in the 2009 Budget, we anticipate additional Provincial, and Municipal capital funds for local roads, recreation, green projects, social housing and culture. We welcome Doug Nadorozny to the position of CAO for the City of Greater Sudbury effective April 30th and look forward to his leadership along with council toward further infrastructure investment and development within our community.

While infrastructure projects vary widely throughout the Department, buildings are being recreated, like at Pioneer Manor, fields are being built, playground equipment is being installed, arenas are being retrofitted, the archive is being filled, the mausoleum is expanding, an aquatics centre is being planned, flags are being raised and the list goes on. As you read through this department newsletter we can all be proud of what has been accomplished at the direction of City Council and via the support of city staff and in the Community Development Department - Citizen Services, Housing Services, Leisure Services, Northeast Centre of Excellence for Seniors Health, Quality Administrative and Financial Services, and Social Services.



## Extreme-Track Makeover



Capital Investment = Phase I \$2.8 million

Like many of our city streets, the Laurentian Community Track is being reconstructed. The community landmark, dating back to the 1970s, has been the host of everything from major international championship games to fundraising events and playground meets. With over thirty years of history, past and present residents undoubtedly have a memory of the venue. In order to keep building dreams, the track is being completely rebuilt with a product from Mondo made of rubber from the Para rubber tree. The company advertises that the track material is a “sustainable resource and environmentally friendly product”. Phase one of the project includes replacing the 8 lane, 400m track and rebuilding the

infield; phase two will see improvements to the supporting facilities. In August, athletes of all ages and abilities will be able to walk, run, or wheel around the new track of today and the future of tomorrow.

Funding for this deserving transformation is graciously being provided by: Laurentian University, the Rainbow District School Board, Le Conseil scolaire publique du Grand Nord de l'Ontario, Le Conseil scolaire catholique du Nouvel-Ontario, the Sudbury Catholic District School Board, FedNor, the Northern Ontario Heritage Fund, Ontario Trillium Foundation, and the City of Greater Sudbury.

### Track Facts:

- More than 4,000 students annually, from across the district, use the track.
- The City of Greater Sudbury owns the track, but Laurentian University owns and maintains the land.
- The stadium has capacity for 5,000 spectators.
- Olympic champion Carl Lewis once competed at the Laurentian Community Track.
- The 2010 Ontario Summer Games, hosted by Greater Sudbury, will attract 3500 participants.
- Mondo supplied and installed track and field surfaces at the 2004 and 2008 Olympic Games.

## More Room for Nutmeg on the HARC Soccer Fields



Capital Investment = \$150,000

Like every sport, soccer has its own lingo too. 'Nutmeg' refers to the soccer ball being passed in-between an opponents legs. Greater Sudbury will be seeing more of these moves with the expanded soccer fields at the Howard Armstrong Recreation Centre in Valley East. With a steady increase in participation since its beginning in 1977, the Valley East Soccer Association currently has more than 1500 participants, 98 teams, 14 divisions, and 200 coaches involved in the sport.

In order to meet the needs of the community, the Valley East Minor Soccer Association and the City of Greater Sudbury partnered to realize four new full-size soccer fields by 2009. Previous to the addition, teams were using various school fields in different parts of the community. Aside from reaching the soccer field quotas recommended in the Parks, Open Space and Leisure Master Plan, the community now has the ability to host tournaments at one site.



## Minnow Lake Sk8 Park: A Total 360

A three-sixty is not just an awesome skateboard move, it's also exactly what happened to the landscape at Carmichael Arena in Minnow Lake. Greater Sudbury's first permanent skate park was a vision made reality thanks to the dedication of community youth, volunteers, social clubs, and private and non-profit organizations. The 10,000 square foot concrete playground for thrill-seeking youth has been an instant and lasting success since its beginning in 2005.

Minnow Lake is not the only place to find adventure; nearly a dozen neighbourhood, seasonal skate parks with moveable equipment are situated in parks, tennis courts, parking lots and arenas throughout the city. The Parks, Open Space and Leisure Master Plan is a guide for future projects and development where skate parks have been made a priority. With the opening of the Minnow Lake Skate Park, goals within the Master Plan are being achieved.



Capital Investment = \$450,000

## The Samaritan Centre: A Good Neighbour

The parable of the Good Samaritan, in Christian literature, emphasizes the importance of helping our neighbours. The building on Elgin Street is more than simply a social services centre for marginalized individuals, it's a place where caring people volunteer time for the benefit of others. Individuals and families have access to meals from the Blue Door Café, a drop-in centre at the Elgin St. Mission, health care services from the Centre de santé Corner Clinic, and counseling from First Steps – all under one roof.

Since the official opening of the Samaritan Centre in 2005, City Council has endorsed a Housing First Strategy proposed by the Community Solutions Team on Homelessness Initiatives. The aim of the strategy is to immediately secure housing for the homeless before assisting with other issues, such as drug addictions and employment. Through the initiative, a Homelessness Network Coordinator and a Housing Case Manager operate from the Corner Clinic at Samaritan Centre site. Beginning with the initial concept, the Samaritan Centre has been about building community and helping our neighbours.



Capital Investment = \$2 million



## Investing in History



The Anderson Farm Museum in Lively is undergoing a revitalization. The municipally owned buildings are a valuable source of history that give us a glimpse of the past in our community. With the help of the Anderson Farm Museum and Historical Society, capital improvement funds were approved by Council for the re-shingling of the main barn and farm house. These buildings, dating back to World War I, are a popular sight of community activities, including the annual Fall Fair and Christmas tree lighting event.



Capital Investment = \$250,000

## Barrier-Free Fun

Playground equipment has evolved from traditional swing/monkey bar/see-saw combinations to colourful displays of modern art. Kids of all ages and abilities will have the opportunity to play together at three new playgrounds scheduled for installation in 2009 at the James Jerome Complex, Howard Armstrong Recreation Centre and Ridgcrest Playground. Community involvement has been key in planning for this project; advice was solicited from community experts, including the Accessibility Advisory Panel, who have made a financial contribution, through the Accessibility Funding, towards the purchase and installation of equipment.

Although the designs have not been finalized, accessible play structures and equipment generally include ramps,

transfer stations (from wheelchair to activity), rubber protective surfaces, sensory panels, and activities that promote mobility, dexterity, discovery and development. Accessible playgrounds are more than just parks, they are places where kids can be kids, and parents and grandparents can share in the experience, regardless of abilities or disabilities.



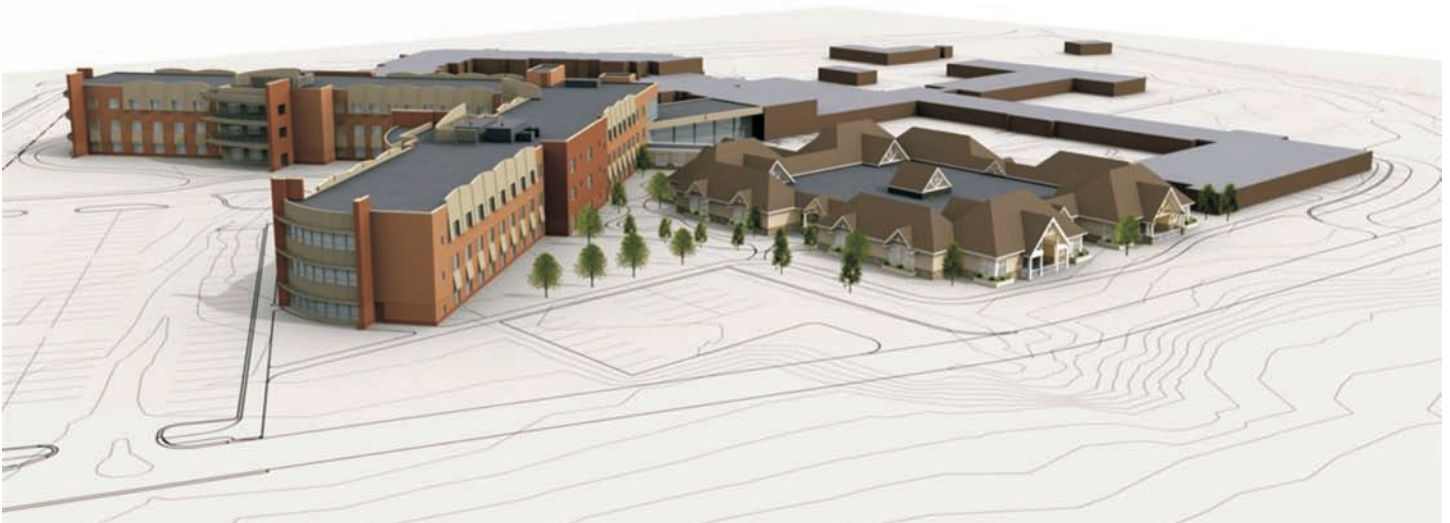
Capital Investment = \$350,000



## Home is Where the Heart is

There is a lot of heart going into the planning and building of a new wing at Pioneer Manor. The Boreal Wing will share many of the same characteristics found in residential neighbourhoods, including: flower box windows, porch-like entrances, front yard trees, and peeked roofs. Adding to the semblance of home is the unique design that includes single rooms with private washrooms. A living room, dining

room and porch are part of each home area comprising of eight individual rooms. The circular floor plan was developed to accommodate residents with dementia and Alzheimer's disease. The two-storey building, drafted by Yallowega Belanger Architecture, will become 'home' for 64 residents in early 2010. This project is in addition to the \$22 million, three storey redevelopment of Pioneer Manor.



Capital Investment = \$15.6 million





## What is the “North East Centre of Excellence for Seniors' Health”?

In 2008, Pioneer Manor became the site of the North East Centre of Excellence for Seniors' Health. Residents of the municipally owned long-term care facility and seniors throughout Northeastern Ontario now have a place where specialized care can be accessed without having to travel beyond 960 Notre Dame Avenue. Services that comprise the North East Centre of Excellence for Seniors' Health, include the:

- Alzheimer's Society Sudbury-Manitoulin: Supporting persons with Alzheimer's disease by offering day programs, respite care, counseling, support groups, resource centre access, and education.
- City of Lakes Family Health Team: A patient centered model of primary health care that provides one-site access to a multidisciplinary team of health professionals, including: physicians, nurse practitioners, and registered nurses.
- Northeast Mental Health Centre Psychogeriatric Resource Consultant: Provides education and training to formal caregivers about seniors' mental health.
- Ontario Network on Prevention of Elder Abuse: A charitable organization dedicated to educating, training, collaborating, and advocating for seniors' rights to live free from abuse and neglect.
- Northeastern Ontario Dementia Assessment and Consultation Service (NODAC): A memory assessment service that focuses on early identification, diagnosis, and service planning for older adults.
- North East Specialized Geriatric Services: An interdisciplinary team of health professionals, including: a Geriatrician, two Clinical Nurse Specialists, a Resource Consultant, a Physiotherapist, an Occupational Therapist, a Social Worker, and a Dietician will collaboratively provide specialized clinics.

As the population in Northeastern Ontario continues to age, the Centre of Excellence for Seniors Health is a valuable asset assisting seniors maintain a comfortable quality of life. A particularly significant achievement has been the recruitment of a Geriatrician. Dr. Jo-Anne Clarke is the first and only practicing Geriatrician in Northeastern Ontario; in fact, in 2000, there were only 56 such professionals in the province. The newly constructed North East Specialized Geriatric Services space, as part of the North East Centre of Excellence for Seniors' Health, will be open and fully functional before the start of summer.



Capital Investment = \$750,000





## Toddling to School

Since the implementation of the province's Best Start initiative in 2005, Greater Sudbury has been allocated a cumulative total of \$6 million (!) in provincial funding for children services. A group of community stakeholders, known as the Best Start Network, helped to develop a Best Start Community Plan to prioritize local needs within the child care and early learning system. The first priority for the funds was to expand the number of licensed childcare spaces in school settings. With the cooperation of all four school boards, renovations were undertaken and furnishings were purchased. Today, Greater Sudbury has 1,659 new childcare spaces since 2005 and 59 licensed childcare centres in school settings.



Capital Investment = \$6 million

## Adanac Ski Hill: A Community Success Story

Adanac Ski Hill reopened on December 23, 2005 because of a dedicated and driven group of community volunteers. Despite the financial barriers and the technical obstacles, the dream of catching big air and carving the powder was realized by the unified goal of the Friends of Adanac, the Adanac Working Group, community partners, and the City of Greater Sudbury. Together, sufficient funds were raised to repair the double chairlift, enhance snow making capabilities, build a new chalet, modify the terrain to improve the skiing and snowboarding site, and buy a fleet of new and used skis and snowboards for rent. Donations from the community ranged from in-kind services and volunteer time to monetary contributions and physical labour.

Adanac, which is 'Canada' spelled backwards, was named through a contest in 1975. Many of the kids that were skiing on the municipal hill during those early years are now adults

doing the same with their own children. The Adanac experience is about sharing time with family and having fun with friends. Each season, the hill provides lessons to 700-800 individuals and weekend fun and holiday programs to

over 250 youth! Part of being a healthy community is knowing what motivates people to be active, getting them involved, and hoping the change becomes a lifestyle choice.



Adanac selected name for municipal ski hill

Adanac was the selection by the committee who named the hill and will be used for the winter season. The name Adanac was selected by the committee who named the hill and will be used for the winter season. The name Adanac was selected by the committee who named the hill and will be used for the winter season.



Capital Investment = \$800,000



## A Match Made in Azilda



Capital Investment = \$500,000

Two services operating apart from each other will become one later this year. The union between the Azilda Library and the Rayside Balfour Museum will take place in the local vacated fire hall. With the current location of the library being undersized and the lack of permanent space for the museum, the availability of the 1950s municipally owned building is a perfect match for centralized service. The 3,500 square foot space will be retrofitted with a combination of different funding sources and partnerships, including the Library Board and the "Let them be Kids" committee.



## Expanding Civic Memorial Cemetery

The Civic Memorial Cemetery is the largest cemetery in the city and the only active cemetery in the former City of Sudbury. In order to meet the needs of the community, multiple cemetery expansions have been taking place. The Civic Memorial Mausoleum was opened in 2001 and expanded again in 2003 offering a total of 540 crypts. With an increased interest in entombments, the cemetery expanded for a third time in 2006, adding 130 corridor style crypts and 100 interior niche units for ash burials. Planning for the future, the City of Greater Sudbury expropriated 9 acres of land from École secondaire catholique l'Héritage in 2006, increasing burial capacity to 10,000 earth burial spots over 31 acres.



Capital Investment = \$1,5 million

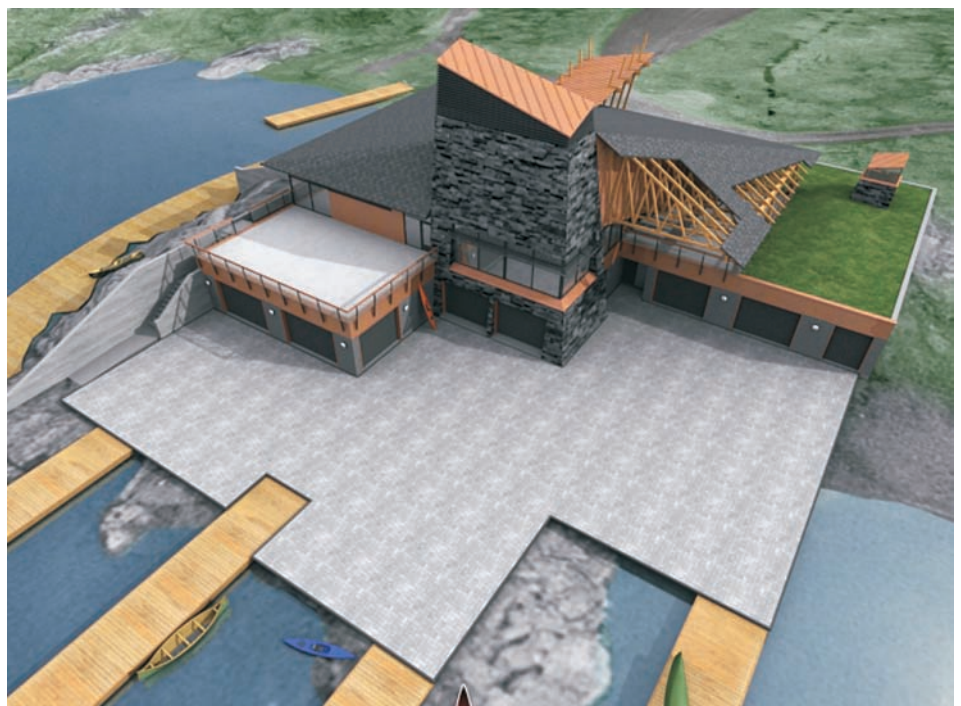


## The Northern Water Sports Centre

The City of Greater Sudbury will soon have a new Northern Water Sports Centre. Having outgrown their current facility near Bell Park's main beach, consultations with users and community members revealed the most suitable location for expansion and increased services to be adjacent to the public boat launch at Bell Grove.

The Northern Water Sports Centre will be a four-season facility offering 16,000 square feet of space for coaching development, event hosting, leisure programming, and storage. Attracting national and international water competitions to the City of Greater Sudbury will be possible with the multi-sport, sanctioned race course.

Partners in this endeavor include the Sudbury Canoe Club, the Sudbury Rowing Club, the Sudbury Dragonboat Festival, and the City of Greater Sudbury. The Northern Water Sports Centre is a community focused initiative that will contribute towards accomplishing several goals of the Healthy Community Strategy, including: promoting an active living/ healthy lifestyle, protecting the natural environment, fostering economic growth, and encouraging civic engagement.



Estimated Capital Investment = \$6 million

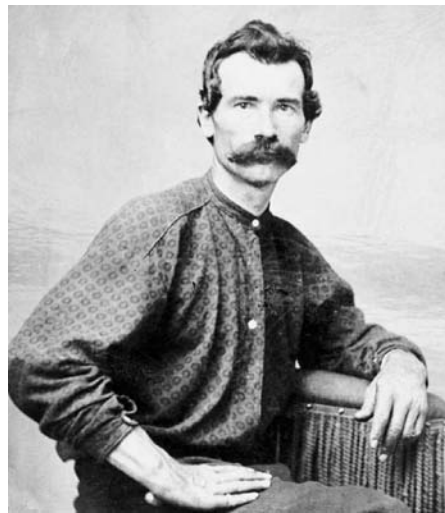


## Creating a Community Archive

The Sudbury District Archives Interest Group has been very active in the community by trying to establish a community archive. The vision of the non-profit, incorporated group of approximately 65 members was realized in 2007 when the Edison Building in Falconbridge was donated to the City of Greater Sudbury by Xstrata Nickel.

Community archives provide a controlled environment for the storage of government, public, and private records. Under the Municipal Act, the City of Greater Sudbury is required to keep City Council minutes, by-laws, resolutions, birth and death records, maps, and plans. Personal collections, on the other hand, contribute to the City's history by adding cultural significance and visual reminders of past events.

Before the availability of 38,000 square feet of space at the Edison Building, records were stored wherever space was available, often in difficult to reach places. For example, the Greater Sudbury library seized an opportunity to acquire three generations of photographs from Galardo-Miron. The 140,000 images were destined for the incinerator before the estimated \$100,000 collection was saved – despite the lack of storage space. The pictures now have a new home where they can be publicly accessed, enjoyed, and appreciated.



Estimated Capital Investment Up To = \$750,000

## Sweet Boxes at the Sudbury Arena

A dozen Club Suites were built on the upper concourse of the Sudbury Arena in 2007. The following Q&A highlights a few interesting facts about the project:

- Q: How many seats are included in a Club Suite?
- A: 12 seats and 4 standing tickets.
- Q: How many seats occupy the Sudbury Arena?
- A: 4,470 seats, 192 Club Suites, 24 barrier free spaces, and standing room for 500.
- Q: Are Club Suites leased by the year?
- A: Yes.
- Q: What are the benefits of Club Suites versus regular seats?
- A: In Suite service and privacy.
- Q: Do Club Suite renters have to buy concert tickets or are they included?
- A: They have the option of purchasing tickets for each event.
- Q: Do they have to pay for their concession food?
- A: They must purchase food and beverages separately.
- Q: Can renters decorate and personalize their space?
- A: No.
- Q: The Club Suites are gated and locked – who has the key?
- A: The Sudbury Wolves hockey club operates and maintains the suites.
- Q: Can Club Suite renters go to their space whenever they want - like for lunch?
- A: No.
- Q: The Sudbury Arena has a 15 year exclusive agreement with Coca-Cola Bottling. Can Club Suite renters bring their own Pepsi if they want?
- A: No.
- Q: Do Club Suite renters have preferred parking too?
- A: Yes.
- Q: Is there a waiting list of people who want to rent the Club Suites?
- A: Yes.

Capital Investment = \$1.5 million



## Timeline of Community Development Infrastructure Projects

### 2005

**Adanac Ski Hill:** Necessary repairs and upgrades were made to facilitate the reopening of the municipally owned ski hill.

**Sudbury Arena Family Washroom:** A Family Washroom was created with a diaper changing station, private nursing area, and a toddler toilet and sink. The washroom is also wheelchair accessible.

**City of Lakes Family Health Team:** The multidisciplinary health team model for Greater Sudbury was approved by the Ministry of Health and Long-Term Care.

**Minnow Lake Skate Park:** The skate park was opened and has been a success.

**Memorial Wall:** Working in partnership with the Legions and a group of citizen volunteers to gather names of the War Dead from across the City of Greater Sudbury, a Memorial Wall was created and unveiled on Remembrance Day.

**Falconbridge Wellness Centre:** Led by volunteers of the Nickel Centre Community Association and working with the Falconbridge Nickel Mines Ltd. and the City of Greater Sudbury, the new Falconbridge Wellness Centre was developed at the Falconbridge Community Centre.

**Bell Park Washrooms:** New accessible washrooms were constructed near the Grace Hartman Amphitheatre in Bell Park.

### 2006

**Sudbury Arena Taylor Sports Room:** An events lounge was constructed as a place for artists and promoters to rest before and after performances. The room is also used as a multi-purpose room for rentals and special events.

**Westmount Adult Fitness Station:** Outdoor fitness equipment for adults was installed.

**Mausoleum/ Cemetery Expansion:** Land was acquired to expand the cemetery grounds, and crypts and niches were added to the mausoleum in response to community requests.

**Lively Ski Hill:** Ski hill operations were reactivated after being inactive after the 2003 season.

**Splash Park:** A splash park (aka water playground) was installed at O'Connor Park.

**Scoreboard:** A new scoreboard, sponsored by the Sudbury Little League Baseball Association, was installed at the Terry Fox Complex.

**Minnow Lake Site Development:** New beachball courts, volleyball courts, walkways and gardens were installed.



### 2007

**Sudbury Arena Club Suites:** Corporate suites and a lounge area were built in partnership with the Sudbury Wolves Hockey Club.

**Bridge of Nations:** This unique display of flags from around the world officially celebrated its opening on Canada Day.

**Community Archives:** The Xstrata Nickel Edison Archive holds and preserves records of significant historical value. The building was donated to the community by Xstrata.

**Buckingham/ Attlee Parkland Allocation:** Improvements were made to the pedestrian path connecting both streets.

**Rick McDonald Sports Complex:** A playground and skate park were built with the assistance of a dedicated team of volunteers.

**Adanac Ski Hill:** A new carpet lift was installed to accommodate new skiers and snowboarders on the beginner hill. This is a critical component to sustaining ski/snowboard participation in our community.





## Timeline of Community Development Infrastructure Projects

### 2008

**Joe MacDonald Memorial Park:** This 'passive park' includes an interlock path and benches near the site where the fallen officer was killed.

**Lively Ski Hill:** The lift was retrofitted for the 2007/2008 winter ski season with ongoing plans to continue building amenities at this facility.

**Sudbury Arena Flooring and Stage:** The wood flooring was replaced with safer modular pieces and the stage was enlarged to accommodate and attract high profile performances.

**Valley East Town Hall Renovations:** The former town hall in Valley East was renovated to accommodate one of the four City of Lakes Family Health Teams. Aside from Valley East and Pioneer Manor, Family Health Teams are located in Rayside Balfour and Walden.

**Pioneer Manor K-Wing Renovations:** The former chapel was renovated into a new dining room and servery.

**Adanac Vale Inco Chalet:** The chalet was opened with assistance from the Friends of Adanac, the Sudbury Construction Association, and Vale Inco.

**Wahnapitae Boat Launch:** the old ramps were removed and replaced with a new ramp.

### 2009

**Laurentian Community Track:** The track is being completely rebuilt.

**Ridgecrest Playground:** Redevelopment of the site is being undertaken through the community engagement process. Key features of the site will include an accessible play structure and retrofit of the fieldhouse among other potential projects.

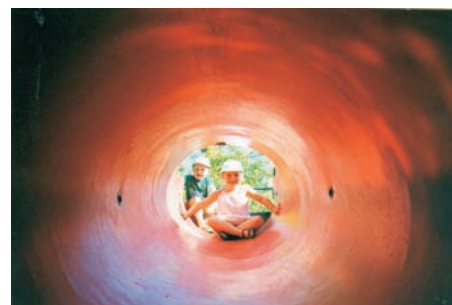
**Northern Water Sports Centre:** The Sudbury Canoe Club has reached the detailed design phase for the new four-season facility and training centre.

**Azilda Library/ Museum:** The Azilda Library and the Rayside Balfour Museum are co-locating in the former Azilda Fire Hall.

**Specialized Geriatric Services at Pioneer Manor:** The interdisciplinary team will be offering specialized services to seniors from Northeastern Ontario on site at Pioneer Manor.

**Accessible Playgrounds:** Three new playgrounds, promoting inclusive play, will be installed this summer.

**Bedford Park:** The playground was redesigned and new equipment was installed.



### Ongoing

**Playground Replacements:** Playground equipment is continually being upgraded and replaced in order to ensure the safety of users.

**Outdoor Rink Upgrades:** This massive undertaking involves replacing, rebuilding, and enhancing the outdoor rinks across the city.

**Soccer Field Development:** Soccer fields throughout the city are either being built or repaired in order to reach the quota outlined in the Parks, Open Space and Leisure Master Plan.

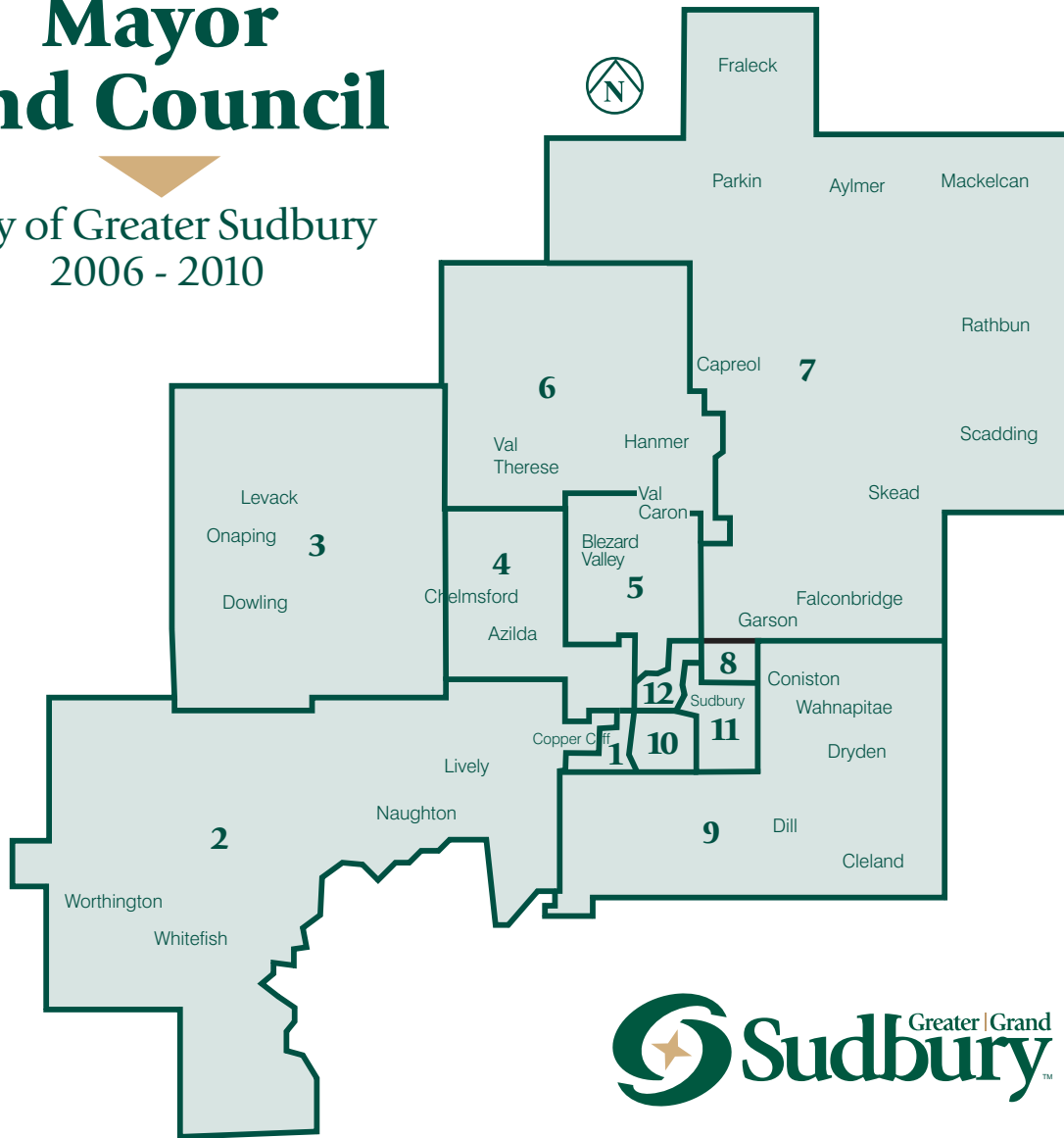
**Splash Park Installations:** As part of the 2009 capital budget allocation, 3 splash parks will be installed at Hillcrest, Coté Park and HARC.





## Mayor and Council

City of Greater Sudbury  
2006 - 2010



Mayor  
John Rodriguez



Ward 2  
Jacques Barbeau



Ward 1  
Joe Cimino



Ward 7  
Russ Thompson



Ward 8  
Ted Callaghan



Ward 10  
Frances Caldarelli



Ward 9  
Doug Craig



Ward 4  
Evelyn Dutrisac



Ward 12  
Joscelyne  
Landry Altmann



Ward 3  
Claude Berthiaume



Ward 11  
Janet Gasparini



Ward 6  
André Rivest



Ward 5  
Ron Dupuis



Healthy Community Initiative Communauté en santé

## Healthy Community Charter

We, the members of the Healthy Community Cabinet for the City of Greater Sudbury, believe a healthy community is one which embraces a broad vision of health through intentional and balanced economic, environmental and social development. We believe that when the values of the healthy community are shared, we will enhance overall public health and sustainability.

We embrace the World Health Organization's definition of a Healthy Community as a place which is constantly improving its physical and social environment and, using the resources of the community, enables its citizens to help each other carry out their daily tasks and develop their potential.

We support the United Nations University Regional Centres of Expertise model for sustainable development, which seeks to engage people of all ages in the assumption of responsibility for creating a sustainable future through public awareness, education and training.

### **The Healthy Community Charter focuses on four priorities:**

- Active Living / Healthy Lifestyle;
- Natural Environment;
- Civic Engagement/Social Capital; and
- Economic Growth.

This Healthy Community Charter will bring together expertise from government, education, business, planning, parks and recreation, economic development, public health, public safety, emergency services, community groups and individual residents, to create a supportive and caring environment that fosters active living and wellness, now and into the future.

We see progress towards a healthier sustainable community requiring strong political leadership, broad participation and community engagement. Through concerted effort and action, we can improve the quality of our community and individual health through:

- capacity building for leadership and diversity;
- partnerships;
- education; and
- advocacy for change.

We, the members of the Healthy Community Cabinet of the City of Greater Sudbury, recognize our civic responsibility as stewards of the community and the importance of taking action, through:

- mentoring
- modeling
- education
- advocacy

To ensure that future generations enjoy an enhanced quality of life and have access to the same opportunities and benefits available today, organizations and individuals will contribute to a healthier community by supporting local, provincial and national initiatives and by working to move Greater Sudbury towards:

### **Active Living / Healthy Lifestyle**

*A community that*

- encourages individuals to take ownership of their health and well being
- supports individual and family wellness and safety programs
- assigns appropriate resources to build capacity and equitable access for all

### **Natural Environment**

*A community that*

- takes pride in its neighbourhoods
- practices, protects, and preserves its natural assets for future generations
- regulates and enforces further environmental protection initiatives

### **Economic Growth**

*A community that*

- supports and promotes what it has to offer
- fosters local employment, skill development and investment in new business ventures
- provides resources to encourage and promote existing and new business opportunities

### **Civic Engagement / Social Capital**

*A community that*

- celebrates and encourages individual and group contributions
- adds economic, environmental and social value through collective and corporate social responsibility
- is responsive and open to individual and neighbourhood diversity and supports safe communities