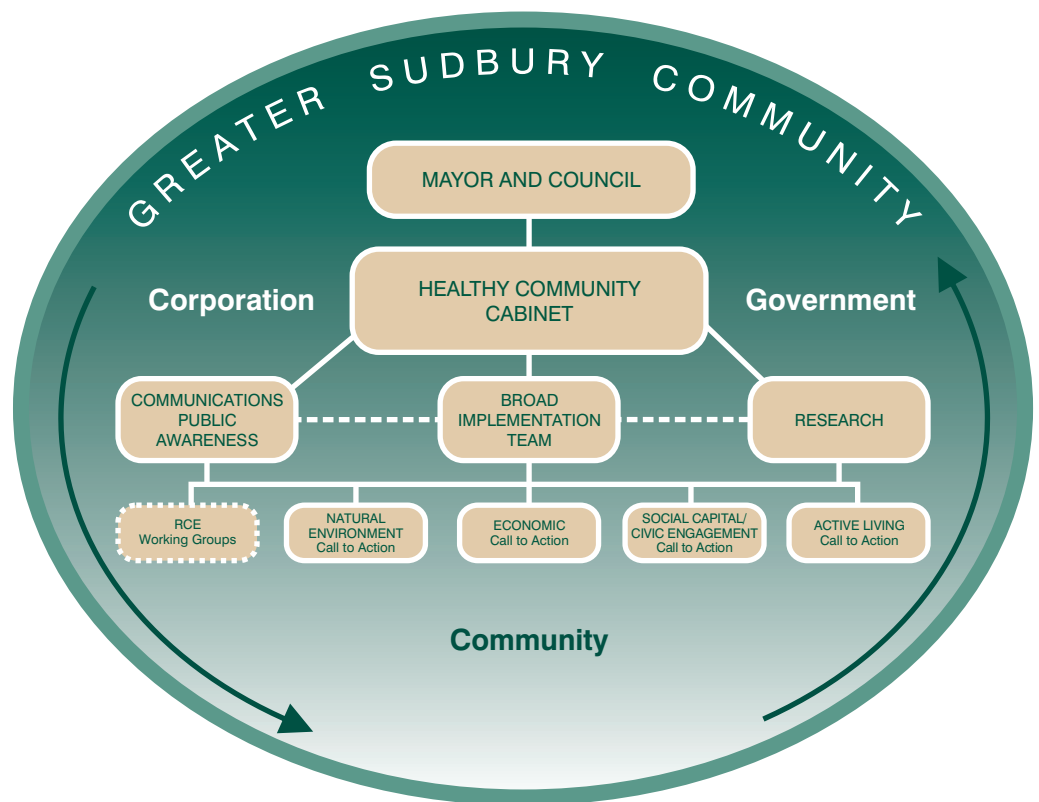




Composition of a Greater Sudbury RCE

The members of the Healthy Community Cabinet and the organizations they represent form the basis of the governance structure for the Greater Sudbury RCE. For coordination of day-to-day activities in Phase 1 (2007-2012) a Greater Sudbury RCE working group will also be created under the direction of the Broad Implementation Team of the Healthy Community Cabinet as represented below.



Creation of a Sudbury RCE working group as part of the Broad Implementation Team – Phase 1